



Government of **Western Australia**
Department of **Health**

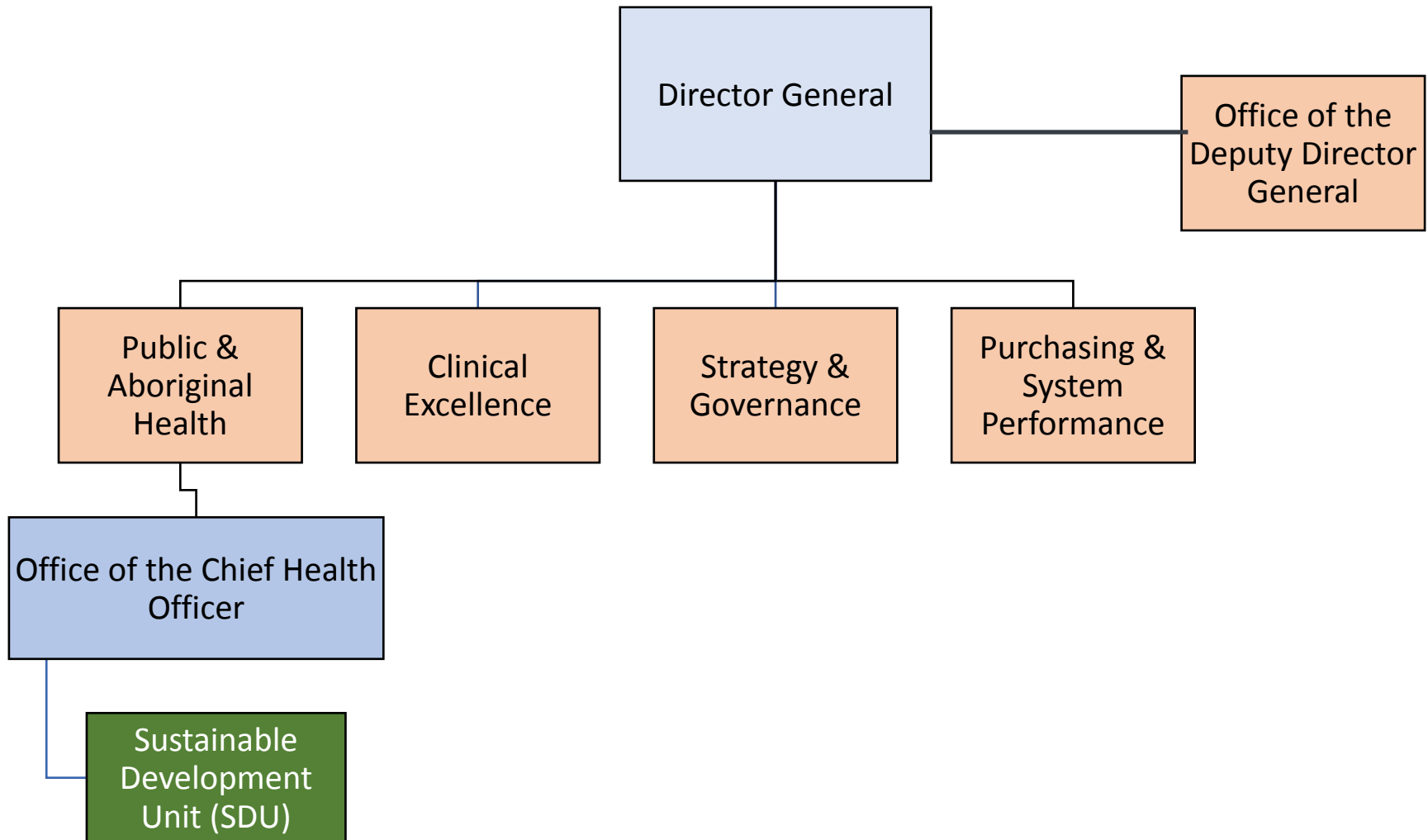
Sustainable Development Unit Updates Climate and Health Community of Practice

Dr Emma-Leigh Synnott BVSc, MBBS, FAFRM
Consultant Physician in Rehabilitation Medicine
Medical Advisor, Sustainable Development Unit, Department of Health

health.wa.gov.au

The Sustainable
Development Unit (SDU):
Quick reminder of who we
are

The Sustainable Development Unit



Purpose and Function

Strategic and operational direction to reduce the health system's environmental footprint

Ensure adaptation plans are in place to respond to the impacts of climate change

Enable partnerships, networks and relationships

Build system capacity and empower and upskill the workforce

Demonstrate leadership, advocacy and innovation

Team members

- Lead Sustainability Officer (1 FTE)
- Senior Policy Officer (1 FTE)
- Medical Advisor (0.4 FTE)

Working closely with us:

- Adaptation Project Officer (Tracy)

What have we been up
to?

Recapping 2022

2021

- Sustainable Development Unit (SDU) established in December
- Lead Sustainability Officer appointed

2022

- Medical Advisor role created
- Senior Policy Officer role created
- Regular WA Health wide Sustainability Roundtables established
- Green Guides for offices and clinical settings released
- Sustainability in Healthcare Scholarship launched
- Gateway clinical practice changes to reduce carbon emissions in WA Health report released
- Clinical Senate on low carbon care



WA CLINICAL SENATE RECOMMENDATIONS

Recommendation 1

Leadership and Sustainable Thinking

Commit to, and act towards achieving ambitious net zero targets for WA Health by 2040



ENVIRONMENTALLY SUSTAINABLE
LOW-CARBON CARE HEALTHCARE



Recommendation 2

Collaboration and Systems approach

Develop a model of system governance for clinical excellence in sustainable healthcare through measurement, reporting, and benchmarking of key indicators.

Recommendation 3

Learning and Enabling Environments

Allocate resources to build knowledge and capability across the health workforce to support the delivery of sustainable healthcare.

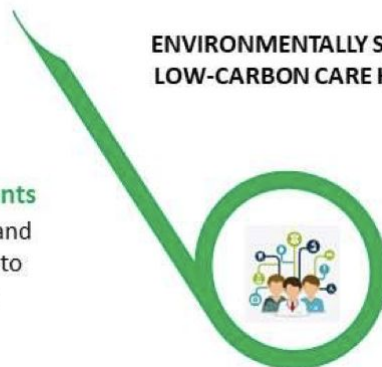


Figure 2 Environmentally Sustainable, Low Carbon Care WA Clinical Senate Recommendations

Recapping some of 2023...



2023

- Baseline carbon footprint of WA Health
- Second year of ND Sustainability Scholarships Program
- Hosted Bi-National Greening the Healthcare Sector Forum
- Your Voice in Health Sustainability Survey Questions
- GESB Sustainable Super Option (Released Oct 2023)
- Removal of desflurane from Statewide Medicines Formulary
- Also:
 - Commenced a regular SDU newsletter
 - Internal and external Websites running
 - Completed over 150 policy responses including that of the National Health and Climate Strategy
 - Over 27 education sessions/ workshops / presentations

Your Voice in Health Survey

ENVIRONMENT SUSTAINABILITY	59% RESPONSE SCALE				% POSITIVE	Variance from 2021 Survey	Variance from WA health system
Q31. It is important to me that my organisation works in a way that supports environment sustainability and climate action	29	48	18		76%	-	-2
Q32. My organisation is committed to making the necessary improvements to meet environmental and climate challenges	7	34	39	15	41%	-	-2

Some other ongoing work....

- Commencing a Nitrous Oxide reduction project
- Input into WACOSS heat and vulnerability project
- Linked with the HEAL Network
- Health Sectoral Adaptation Plan (Tracy)
- Strategy for an Environmentally Sustainable and Climate Resilient Health Care System (name TBC)
 - Extensive consultation process
 - Senior Health Leadership forum input
 - Clinical Senate input

Thank you